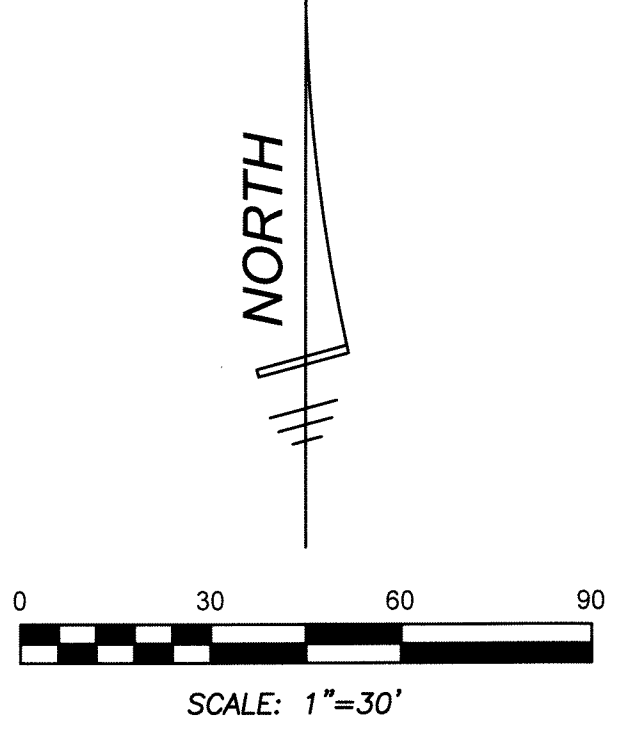


ATLANTIS OUTPATIENT CENTER

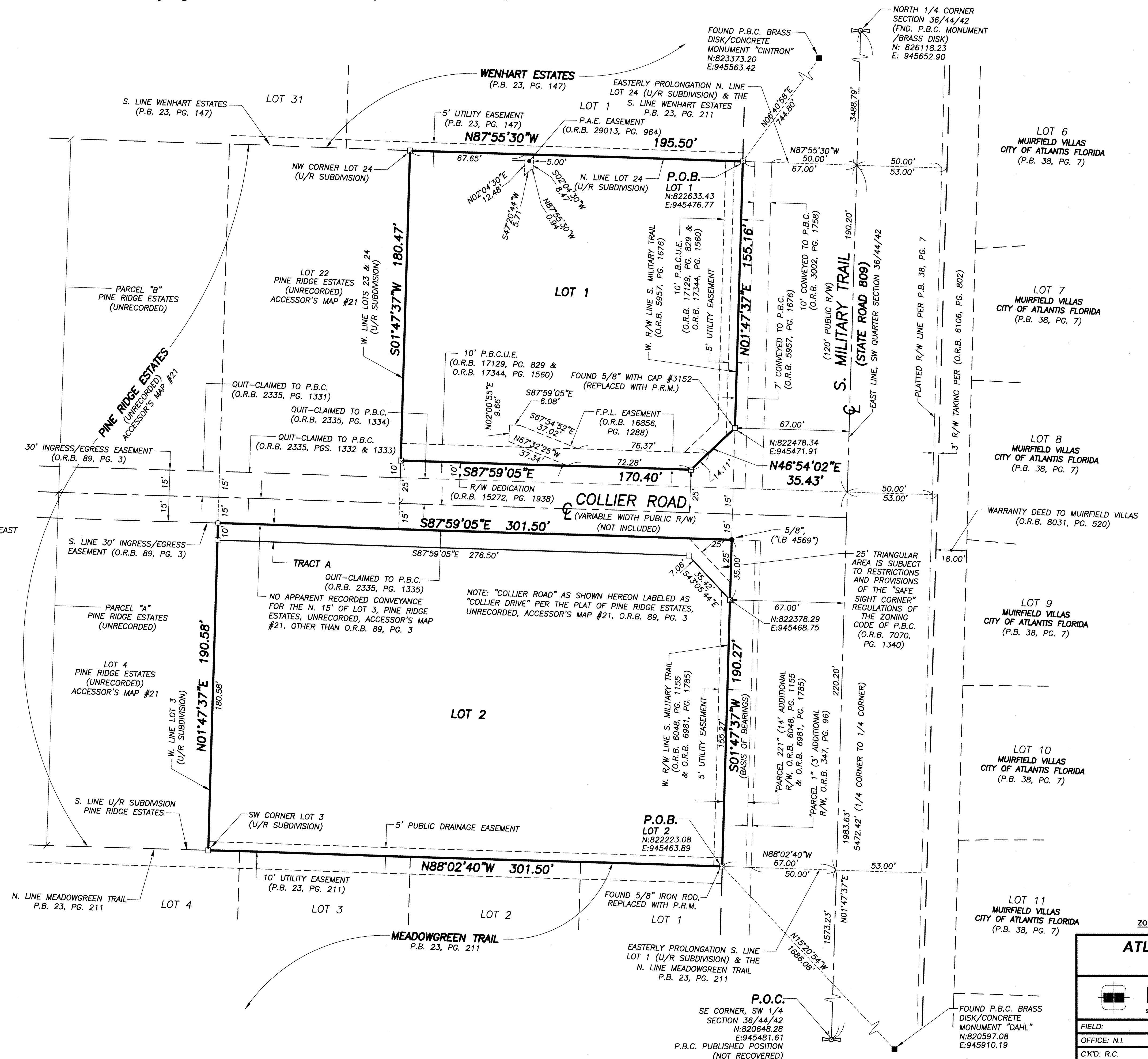
Lying in Section 36, Township 44 South, Range 42 East, Palm Beach County, Florida.

25



ABBREVIATIONS/LEGEND

- (C) = CALCULATED
- C, C/L = CENTERLINE
- F.P.L. = FLORIDA POWER & LIGHT
- L.A.E. = LIMITED ACCESS EASEMENT
- LB = LICENSED BUSINESS
- LS = LICENSED SURVEYOR
- L.W.D.D. = LAKE WORTH DRAINAGE DISTRICT
- N = NORTHING (WHEN USED WITH COORDINATE)
- E = EASTING (WHEN USED WITH COORDINATE)
- O.R.B. = OFFICIAL RECORDS BOOK
- (P) = PLAT
- P.A.E. = PEDESTRIAN ACCESS EASEMENT
- P.B. = PLAT BOOK
- P.B.C. = PALM BEACH COUNTY
- P.B.C.U.E. = PALM BEACH COUNTY UTILITY EASEMENT
- PG. = PAGE
- P.O.B. = POINT OF BEGINNING
- P.O.C. = POINT OF COMMENCEMENT
- P.R.M. = PERMANENT REFERENCE MONUMENT
- R.P.B. = ROAD PLAT BOOK
- R/W = RIGHT-OF-WAY
- U.E. = UTILITY EASEMENT
- U/R = UNRECORDED
- Δ = CENTRAL ANGLE
- A = ARC (LENGTH)
- R = RADIUS
- = SET 4"x4" CONCRETE MONUMENT WITH DISK STAMPED "P.R.M. LB #4569"
- = FOUND 4"x4" CONCRETE MONUMENT (AS NOTED)
- = SET 5/8" IRON ROD & CAP STAMPED "WALLACE LB #4569"
- = FOUND IRON ROD AND CAP (AS NOTED)
- = SET MAG NAIL & DISK STAMPED "P.R.M. LB #4569"
- 36/44/42 = SECTION 36, TOWNSHIP 44 SOUTH, RANGE 42 EAST



SHEET 3 OF 3

ZONING CONTROL NUMBER: 1977-00077

ATLANTIS OUTPATIENT CENTER		
WALLACE SURVEYING		
CORP. LICENSED BUSINESS # 4569 5553 VILLAGE BOULEVARD, WEST PALM BEACH, FLORIDA 33407 • (561) 640-4551		
FIELD:	JOB NO.: 15-1566-S	F.B. PG.
OFFICE: N.I.	DATE: APRIL 2017	DWG. NO. 15-1566-4
CK'D: R.C.	REF: 15-1566-3.DWG	SHEET 3 OF 3